



# THE EXTENDED FAMILY

© 2011 Warren Wilson Presbyterian Church (USA) and College Chapel Inc.

[www.warrenwilsonchurch.org](http://www.warrenwilsonchurch.org)

Volume 24 Issue 4

May 2017

---

## *Steve's Slant*

“What’s in a name?” It’s one of the most famous lines from one of the world’s greatest plays. The question is posed by Juliet, who asks it of Romeo, by way of arguing that their love can overcome the bitter rivalry that separates their two families, the Montagues and Capulets.

With Easter now in our rearview mirror, we are rapidly heading toward the next big event on the Christian Calendar: Pentecost, the day when we celebrate the arrival of the Holy Spirit in the biblical story and in the life of the church.

As we begin to ponder the identity of the third member of the Trinity, and the role of the Holy Spirit in our lives as individuals and in our life together as a congregation, I think it’s worth reprising Juliet’s question: What’s in a name? Because it turns out, there’s a lot to consider.

In the New Testament, the first mention of the Spirit is at the baptism of Jesus, when we’re told that “the Spirit of God” descended upon Jesus. In Greek, the word for “Spirit” here is *pneuma*, which in English is also translated “breath.” I think the implication is clear: At the start of Jesus’ public ministry, the very breath of God descends upon him, filling him with God’s life and power.

Later, in John’s gospel -- in stories that we will soon be looking at both in worship and in Sunday school -- Jesus promises that God will send “the Comforter, the Holy Spirit.” The word “Comforter” comes from the Greek word, *parakletos*, sometimes translated “advocate.”

So, really, we have two questions to consider: one a question of identity (what’s in a name?); one a question of role, or function (what does this figure do?). The short answer to both is that in the gospel record the Spirit is represented as God’s own breath, sent to be with us and for us in the way Jesus himself was sent to be with us and for us, to empower us for the work we’re called to do as the Body of Christ, to comfort us in times of sorrow or stress, to advocate for us in times when we’re feeling vulnerable.

That is a gift worth celebrating! In the Christian calendar, Advent is that season when we prepare for the coming of Christ into our lives. We don’t have a specific word for it, let alone a season dedicated to preparing for the arrival of the Holy Spirit. But we’ll make one of our own, starting on May 21st, with the story of Jesus’s promise to send us the *parakletos*.



---

**PRAYERS WELCOME FOR:** Jane Nelson; Neil Satterfield; Dr. Steven Williams; Barbara Robinson; Calvin Clark; Chuck & Lue Stephenson and Mary Moorrees.

**Church contacts:**

Church Office 298-9092

Church Administrator; Donna Eagle Joslin 771-209 e-mail= [deagle@Warren-Wilson.edu](mailto:deagle@Warren-Wilson.edu)Minister; Rev. Dr. Steve Runholt 771-2095 e-mail= [srunholt@Warren-Wilson.edu](mailto:srunholt@Warren-Wilson.edu)Director of Music, organist; Vivian Hare e-mail= [vhare03@gmail.com](mailto:vhare03@gmail.com)Treasurers; Jerry VanEman 258-1082 e-mail= [jerryvaneman@gmail.com](mailto:jerryvaneman@gmail.com)Ray Stock 298-0955 e-mail= [stoc5054@bellsouth.net](mailto:stoc5054@bellsouth.net)Assistant Treasurer; Alisa White 2986778 e-mail= [aliswht@yahoo.com](mailto:aliswht@yahoo.com)Book Keeper; Nan Woodard e-mail= [nan.woodard@yahoo.com](mailto:nan.woodard@yahoo.com)

---

**May Birthdays!**

Gene Witherspoon	May 1	Ron Wilson	May 2
Babs Guardenier	May 8	Lizzy Newman	May 10
Pat Wilson	May 11	Tess Newman	May 13
John Williams	May 15	Bill Fore	May 27
Ned Guardenier	May 27	Zach Pulsifer	May 28
Rick Garrison	May 30		



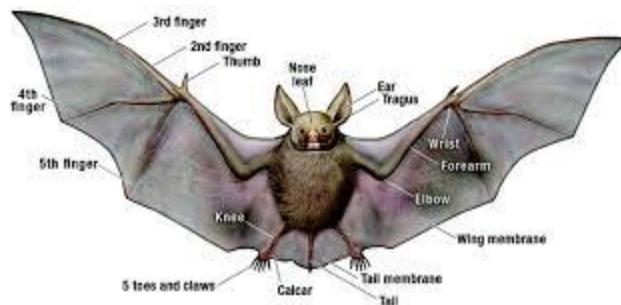
The Warren Wilson Book Group will meet at noon on Thursday, May 11th in the Fellowship Hall. It will be the last meeting before our summer break. The group will resume in Sept. with the tradition Salad Luncheon. Corise Gambrell will lead this month's discussion of "Clementine: The Life of Mrs. Winston Churchill" by Sonia Purnell. For those interested in History, it promises to be an interesting discussion. Clotilde will bring snacks to go with your sandwiches. Come join the discussion.

(Submitted by Sandy Brauer)

---

**Just For Fun**

On May 10, beginning at 5:00 pm, join CC and Carol in Ransom Fellowship Hall to continue to learn more about bats. This time, we'll be building bat boxes. Bring the kids for an "all hands on deck" experience! Please sign-up in the Narthex following church so we'll know how much food to order.  
(meal cost is \$6.00 at the door)



---

**INTER-GENERATIONAL PROJECT : SWANNANOA COMMUNITY GARDEN CLEAN-UP**

Join with our children on May 21st at the Swannanoa Community Garden for an afternoon clean-up to prepare the garden for planting. We will leave after church. Contact Kristin Williams for directions. Bring a bag lunch and work gloves. Drinks and snacks will be provided. Last fall our children helped to clean up the last of summer produce. Now we can help prepare for summer planting - it is a fun afternoon with tasks suited to all ages.

Come and support our children.

**FINANCIAL RESULTS FOR FIRST QUARTER ARE ENCOURAGING.** At the end of March, 2017 Operating Fund income for the year was \$3,541 greater than expenses, without the transfer of any funds from Memorials. The following are actual and budgeted numbers for some of the budget lines:

	Actual	Budgeted
Pledged giving	\$50,520	\$45,000
Regular unpledged giving	\$ 2,814	\$ 4,500
Loose plate offerings	\$ 1,004	\$ 1,500
Total income from all sources	\$58,703	\$57,172
Total expenses	\$55,162	\$56,891
Net Income	\$ 3,541	\$ 281

Thus, income is a little above budget, and expenses a little below budget. Copies of the full profit and loss statement and balance sheet showing funds in each of the designated (used to be called special purpose) funds are available on request from Jerry Vaneman, Treasurer.

Of particular note is the continuing generosity of the congregation this quarter, not only for their support of the Operating Fund budget which pays for day to day personnel, facilities, administration and program costs, but also for special offerings. Souperbowl raised \$932 split equally between MANNA Food Bank and Swannanoa Valley Christian Ministry, Bowls for the Soul raised \$480 for SVCM, 5 Cents a Meal Income for Presbytery hunger programs was \$388, contributions for the going away gift for Beth were \$1,920, and a church family contributed \$1,000 for the Presbytery Building Hope Campaign. In addition, a big thank you to the families who made major gifts, one of \$5,000 for the Social Outreach Endowment Fund, one of \$10,000 to support the Operating Fund Reserve (this will provide a buffer to carry the Church through the summer when expenses often exceed income), and one of \$3,500 to support the Operating Fund Budget.

Finally, some of you who have investments in equities may not be aware of the tax benefits available for contributing them directly to the church or other non-profits. You may be able to claim not only their value at the time of donation as a deduction, but also avoid payment of capital gains. This can be particularly helpful with equities at near record highs and with the uncertainty about revision of the tax system. For more information talk with your financial advisor or with Ray Stock our Receiving Treasurer.

Budget and Finance Committee

---

### PLEASE READ THIS!

FOR THE FIRST TIME, WE (AND MANY OTHER AREAS OF CAMPUS) WILL NOT HAVE A STUDENT WORK CREW THIS SUMMER AS OF May 16.

This means every group will need to do their own set-up and clean up after events.  
Please plan accordingly.



Asheville Buncombe Community Christian Ministry (ABCCM) would like you to know who from your church, is working hard for them to help those in need at the Crisis Center in Downtown Asheville.



(Continued on next page)



**The Crisis Ministry serves more than 17,000 hot meals a year to members of our community. Many of our neighbors live paycheck to paycheck, making difficult choices on a daily basis between rent, utilities, food, health care, day care and so much more.**

**An unexpected expense can throw these families into financial crises. When that happens, people turn to the ABCCM Crisis Ministry for help. This ministry serves the**

**low-income citizens of Buncombe County who are facing financial emergencies and are struggling to meet life's basic needs.**

**Each day we see people who are working in one or more low-wage jobs, the disabled or elderly who are living on fixed incomes, and those facing increasing costs of living, stagnant wages and a lack of affordable housing. We provide them with food boxes, gently used clothing, utility and rental assistance; and a hot meal in our soup kitchen.**

**Please thank the following volunteers from your church:**

**John Laney; Susan Laney; Burnace Roberts; Virginia Marvin; Georgena Millar; Pat Hardy; Pat Wilson; Barbara Higgins; Emma Eagle Joslin; Donna Eagle Joslin; Sandy Brauer; Bitsy Singer and Edythe Wiener.**

**(Photos, courtesy of Emma Eagle Joslin, who volunteered and took photos of our church team as part of her Senior Project for Owen High School)**

---

At the April 19 Just for Fun, CC Cole and Carol Whittemore introduced us to the science of Chiropterology: the study of bats. Chiroptera means “hand-wing”, and bats’ wings are modified hands, which give them great maneuverability as they “swim” through the air. Bats serve nature in several ways. Fruit eaters spread seeds, nectar eaters pollinate plants, and insect eaters like our local ones can consume 1000 mosquitoes in a night.

Bats range in size from one inch to five feet, and all are mammals. The females fly with their babies clinging to their chest, and can nurse upside down. Bats like to sleep in colonies, some of which contain thousands of bats. Local bats can sleep in special houses, which we can construct.

At the next Just for Fun on May 10, we will have the chance to make a bat house! CC and Carol will bring the supplies, and show us how to properly construct a house which is safe and comfortable for bats. The hands-on program will be especially attractive for children, so plan to join us and learn how we can help these wonderful animals!

(Submitted by Vicki Collins)



## Presbyterian World Mission

Announcement: On April 1, Jose Luis Casal, who served most recently as general missionary for Tres Rios Presbytery, will begin as our new World Mission director with a long history of international mission experience and demonstrated gift of creativity. He brings vision and passion to share with all of us in the church.

The Social Outreach Committee submits this report of the progress of our Mission co-workers serving in Malawi, Barbara Nagy, and serving in Dominican Republic and Haiti, Mark Hare and Jenny Bent.

With 12 years of service as Medical Director, Nkhoma Hospital and Ebenezer School in Malawi, Barbara Nagy made the decision to leave Malawi to return to the U.S. for family reasons. She resigned from PC (USA) Mission Service at the end of February 2017. She reports, "Hospital services have never been interrupted...we continue to be known as a place of compassion and excellent care. Schools are continuing to operate and Ebenezer Primary School achieved a 100 % pass rate for the leaving exam, a significant achievement. Nkhoma Nursing College and the Seminary continue to educate students and have been joined by Nkhoma University". Barbara writes, "For the past six years, I have had the dream of a vibrant community health system at Nkhoma where preventative health choices would be within reach of any village, and village health workers would live in remote communities to provide immediate care for sick children. That dream took a huge step forward recently due to the faithful support of the Presbytery of Western North Carolina and its Building Hope Campaign which sent funds for a mobile medical clinic".



Anna Nagy, Barbara's second daughter, has attended Warren Wilson College for the past two years, transferring to ASU in her junior year to major in Interior Design. She enjoyed attending the Easter service at WWPC with us. WWPC funds allocated for Barbara Nagy and the Malawi mission have been transferred to the Presbytery of WNC Building Hope Campaign supporting two local ministries – Vital Churches and Camp Grier – and two ministries abroad – Malawi and Guatemala.

"As one in Christ the combined efforts of all the churches in our Presbytery are continuing to enrich these missions by thoughtfully and prayerfully building hope for the future of their ministries. We encourage you to be involved through prayer, participate in the activities, encourage each other and join in the joy of the success of these vital ministries."



**Mission correspondence letters are posted on the bulletin board in the Parlor.**

Mark Hare and Jenny Bent: Mission co-workers serving in Dominican Republic and Haiti.

Mark writes "Jenny, Keila, Annika and I are back in the field (following a year in the U.S. assigned to mission visits to churches). Mark, a graduate of Warren Wilson College, 1987, is serving in Dominican Republic working as a team with Jenny on extending Community Health Evangelism to new communities.

He will continue to work in Haiti for 10-15 days every three months as part of the work of the grassroots farmer organizations in Haiti, especially the network known as FONDAMA, part of the Presbyterian Joining Hands Program.

Mark reports on a visit in December 2016 to Port au Prince where he traveled up into the mountains of Verettes to see first-hand what Hurricane Matthew had done back in October.

The people did not receive the brunt of the devastating wind but they were inundated with the rain. A number of the mountain homes were heavily damaged and people lost much of their bean crops and suffered loss of many of their goats, chickens and pigs. Mark was encouraged to see farmers planting their winter bean crop. He writes of the privilege of being a part of this work and the blessings of the support of the PC (USA) mission.

---

## Save the Date for our 9th Annual Spirituality Conference!

**Saturday, October 28, 2017**

**A day with The Rev. Dr. Barbara Brown Taylor**

Join us for this one-day conference when Barbara will explore with us how religious pluralism challenges and deepens Christian identity in a world of many (and no) faiths. She will also speak in the Dean's Forum on Sunday, October 29 at 10:10 (in between services).

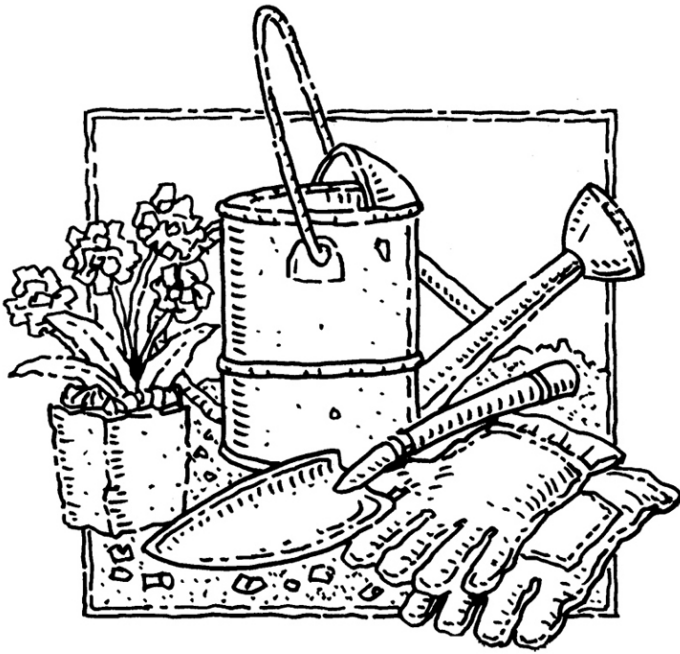
If you are not familiar with Barbara, she is a New York Times best-selling author, college professor, and Episcopal priest. Her first memoir, *Leaving Church*, won a 2006 Author of the Year award from the Georgia Writers Association. Her last book, *Learning to Walk in the Dark*, was featured on the cover of TIME magazine. She has served on the faculty of Piedmont College since 1998 as the Butman Professor of Religion and has been a guest speaker at Emory, Duke, Princeton, and Yale, as well as a guest on SuperSoul Sunday with Oprah Winfrey. Taylor and her husband Ed live on a farm in the foothills of the Appalachians, sharing space with wild turkeys, red foxes, white-tailed deer and far too many chickens.



This day long conference will include lectures, discussion and question & answer. **We will notify you in late summer when registration is open.** The cost is \$65/person and includes lunch. For groups of 4 or more, the rate is \$60/person, and the late registration (after October 22) price is \$70/person.

The location of the conference is the Cathedral of St. Philip, 2744 Peachtree Road NW, Atlanta, GA 30305. Please visit our [website](#) for hotel and other information.

Blessings,  
The Rev. Cathy Zappa  
Canon for Spirituality and Outreach



At Warren Wilson  
Presbyterian Church we  
are mothers and fathers,  
single and married, gay  
and straight, young and  
old, black and white,  
prosperous and poor,  
uncertain and sure,  
broken and whole. We  
are the many faces of  
humanity-yet as a  
community of faith, we  
are committed in our  
diversity to be one in  
Christ!

May

Warren Wilson Presbyterian Church  
CPO 6355/PO Box 9000  
Asheville, NC 28815-9000  
01-0001-1320

*The Extended Family* □